

vivre PANELS



RUBBERWOOD FINGER JOINT WOOD BOARD



ABOUT US



Journey

Journey that began with a plywood manufacturing unit in East India some 30 years ago, which is still going strong.



Expansion

Expanded into import and mass-market supply of related ply-panel products, veneers, PVC and premium decoratives.



Infrastructure

Set up of centrally-managed regional warehouses and dealers for a pan-India infrastructure : Delhi, Chennai, Kolkata, Hyderabad and Gandhidham.

www.vivrepanels.com

CONTENTS

INTRODUCTION OF RUBBERWOOD	4
TECHNICAL SPECIFICATIONS	6
FEATURES	7
PROCESS OF FINGER JOINTING	8
RUBBERWOOD APPLICATIONS	9
PRODUCT CATEGORIES	18

INTRODUCTION OF RUBBERWOOD

Finger Joint Solid Wood Boards are made from treated rubber wood panels which are sequentially kiln-dried, finger-jointed, edge-glued, cold-pressed and sanded to make ready-to-use panel boards. The finger-jointing technique ensures strength equivalent to any hardwood, with the bonus of dimensional stability.

Vivre Finger Joint Panels will therefore, remain straight under the toughest climatic condition and are very adaptable to sawing. Engraving, molding or staining for the purpose of interior design.

AVAILABLE THICKNESS (mm)

STANDARD SIZE - 8ft x 4ft

- 12mm
 - 18mm
 - 24mm
 - 30mm
 - 35mm
 - 40mm
- 



RUBBERWOOD

AVAILABLE FACE GRADE - AA, AB, AC

TECHNICAL SPECIFICATIONS

TEST PRESCRIBED

OBSERVED VALUE

Color	Pale cream to yellowish
Grain	Mostly Straight
Density after drying	600 to 620kg/m ³
Relative density	0.63 to 0.99
Tensile Strength (Along the grains)	720kg/cm ²
Tensile Strength (Across the grains)	58kg/cm ²
Glue shear strength	Above 42 N/mm ²

SPECIFICATIONS

- Moisture: 8-12%
- Length & width tolerance: 0/+3mm
- Thickness tolerance: 0/+2mm
- Glue: D4, both sides sanded Grit 180-240
- Face: AA, AB, AC

FEATURES



High
Durability



100%
Solid Wood



Directly
Paintable

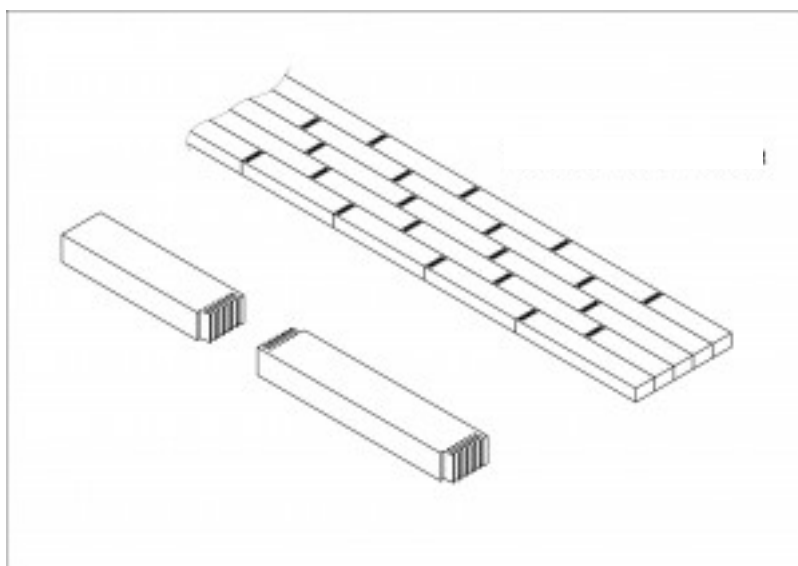
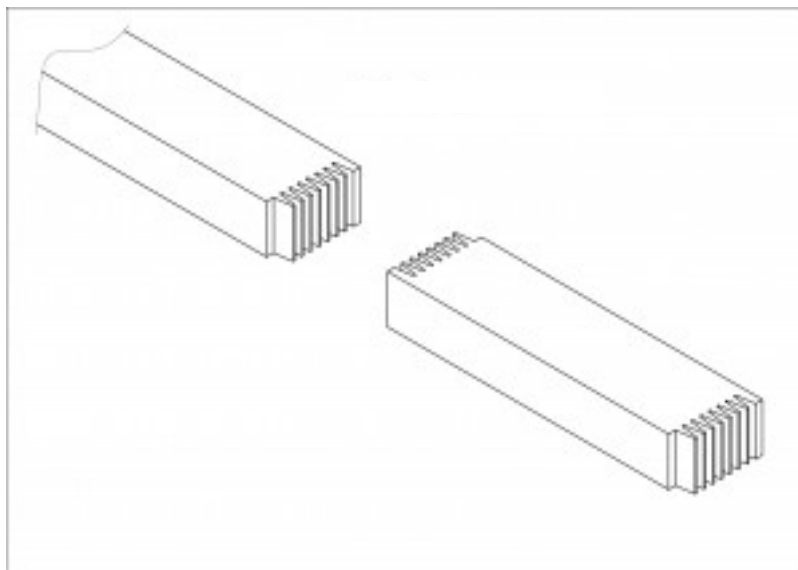
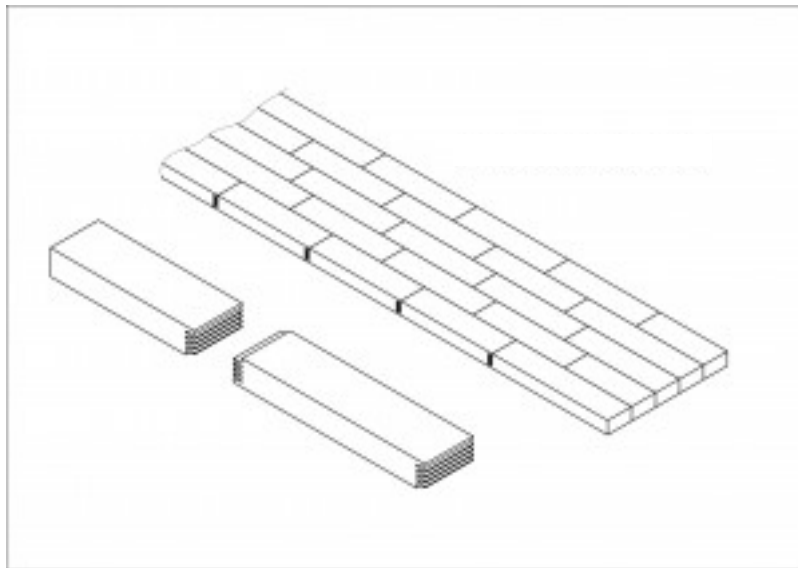


HIGH
Strength



Scratch
Resistant

PROCESS OF FINGER JOINTING



RUBBERWOOD

APPLICATIONS

- Tables
- Furniture
- Wardrobes
- Paneling
- Beds
- Doors
- CNC Designs



RUBBERWOOD APPLICATIONS



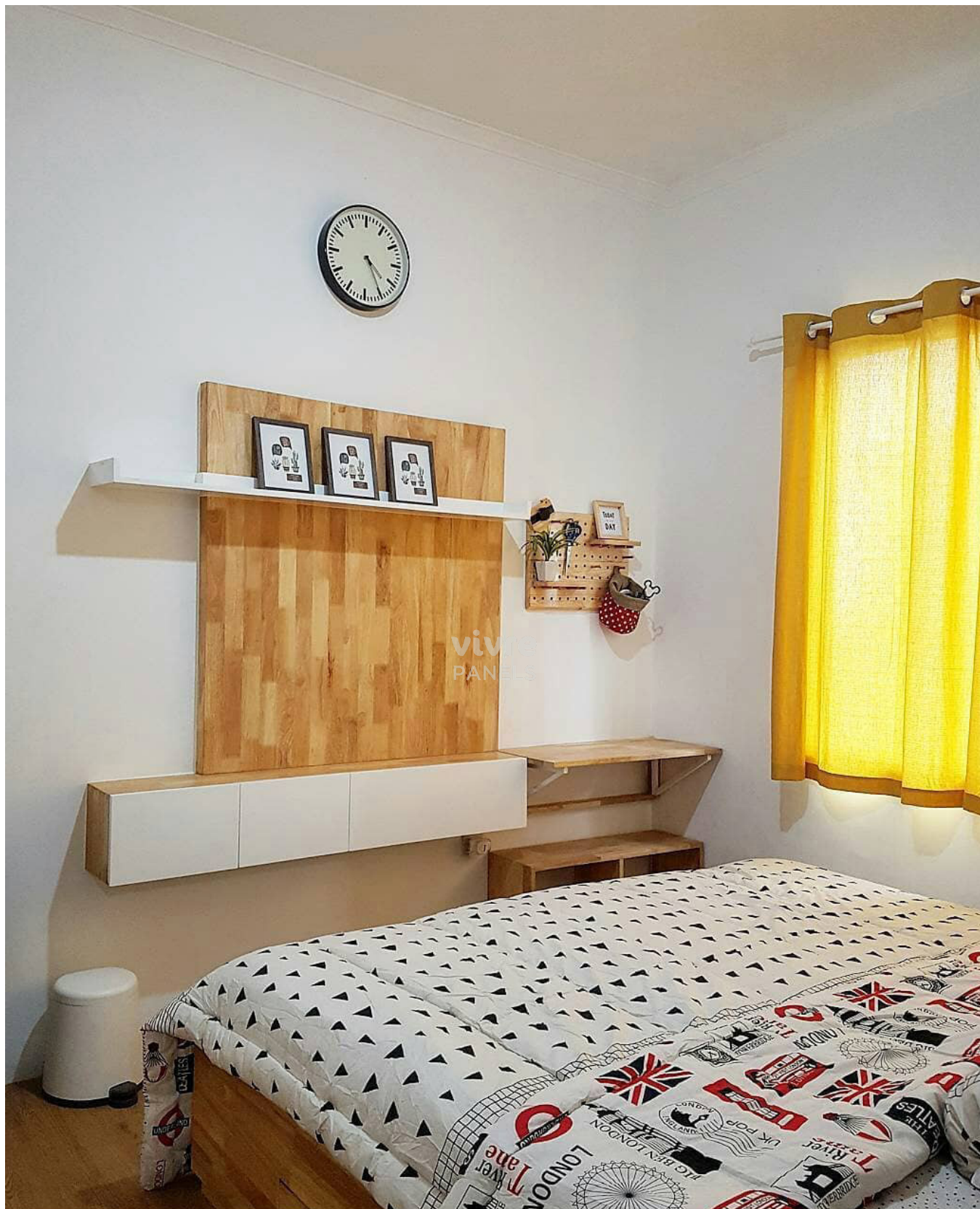








vivre
PANELS







PRODUCT CATEGORIES



PLYWOOD & BOARDS

- Flexible Plywood (MLH / Gurjan)
- Birch Plywood
- Rubberwood Finger Joint Board
- Keuring (Gurjan) Plywood
- Oriented Strand Board (OSB)
- Laminated (Melamine) Plywood
- MDF
- Insulated Softboard (Pin Board)
- Malaysian Solid Wood Door



WOOD VENEERS

- Teak Veneers
- Reconstituted Veneers
- Imported Veneers (< 4 mm)
- Exotic Veneers (.55+)



VIVRE PVC

- Vivre PVC Foam Boards
- Vivre PVC Solid Doors
- Vivre PVC Grill Boards (CNC Jalis)



VIVRE DECOR

- Vivre Profiles
- Vivre PETG Sheets
- Evowood: Solid Wood Panels
- Vivre PVC Marble Sheets
- Vivre Louvers
- Vivre WPC Exterior Profiles

vivre PANELS



info@vivrepanels.com

www.vivrepanels.com



facebook.com/vivrepanels/



[@vivrepanels](https://www.instagram.com/vivrepanels)

Note:
We reserve the right to change product specifications or its availability in this catalogue. Although we try to ensure that all information in the catalogue is correct at the time we apologies for any omissions and errors. All dimensions given are liable to be rounded. Please also note that some articles may vary in color from shown in this catalogue.