

VivreClad

ALUMINUM CLADDING FOR INTERIORS & EXTERIORS

ACP
LOUVERS

&

ACP
SIDING BOARDS



The 1st comprehensive range of panelling options for Exteriors
from the house of

vivre PANELS

WHY ALUCLAD?



100% Reinforced Core

AluClad is 100% Re-Inforced. This makes it significantly superior in strength & rigidity compared to other cladding materials such as WPC & PVC Soffit which are hollow.

Natural Timber Finish

AluClad is finished with a high-performance Exterior-Grade wooden vinyl film on top. This is manufactured using special additives making it impervious to UV rays & all weather.

A European Product

AluClad is made entirely using advanced European technology to make it the premier product for cladding in exteriors.



NON WARPING

AluClad's aluminium is not only lighter, but stronger and straighter than real wood and will not warp over time.



COLOUR STABILITY

All of our colours have been rigorously tested to withstand the most extreme environments.



WEATHER RESISTANT

AluClad won't swell, grow mould or rust when exposed to wet conditions. Unlike wood, it is protected from corrosion.



FIRE RESISTANT

AluClad is a fire resistant product and manufactured to meet relevant international fire standards.



ECO FRIENDLY

AluClad uses VOC free coatings, lead free finishes and is 100% recyclable at the end of its life span.



SCRATCH RESISTANT

The top layer of AluClad is baked on to provide resistance to chipping, flaking, blistering and scratching.



INSECT PROOF

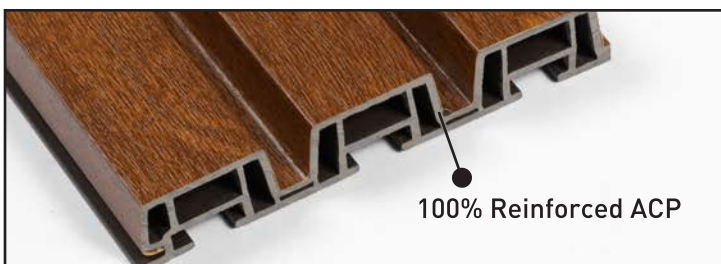
AluClad is impervious to termites and ants, and doesn't require chemical treatments to be protected from pests.



LOW MAINTENANCE

Our specialised finishes have outstanding properties to ensure ease of maintenance and longevity of your surfaces.

SPECIFICATIONS



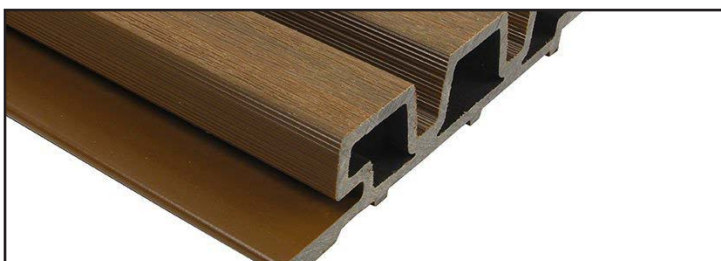
AluClad Louvers

Core: ACP Composite Material
Finish: Exterior-Grade PVC Membrane
Height: 9 ft (2750 mm)
Width: 5.31 inches (135 mm exactly)
Thickness: 20 mm



AluClad Siding Board

Core: ACP Composite Material
Finish: Exterior-Grade PVC Membrane
Height: 9 ft (2750 mm)
Width: 4.53 inches (115 mm exactly)
Thickness: 16 mm

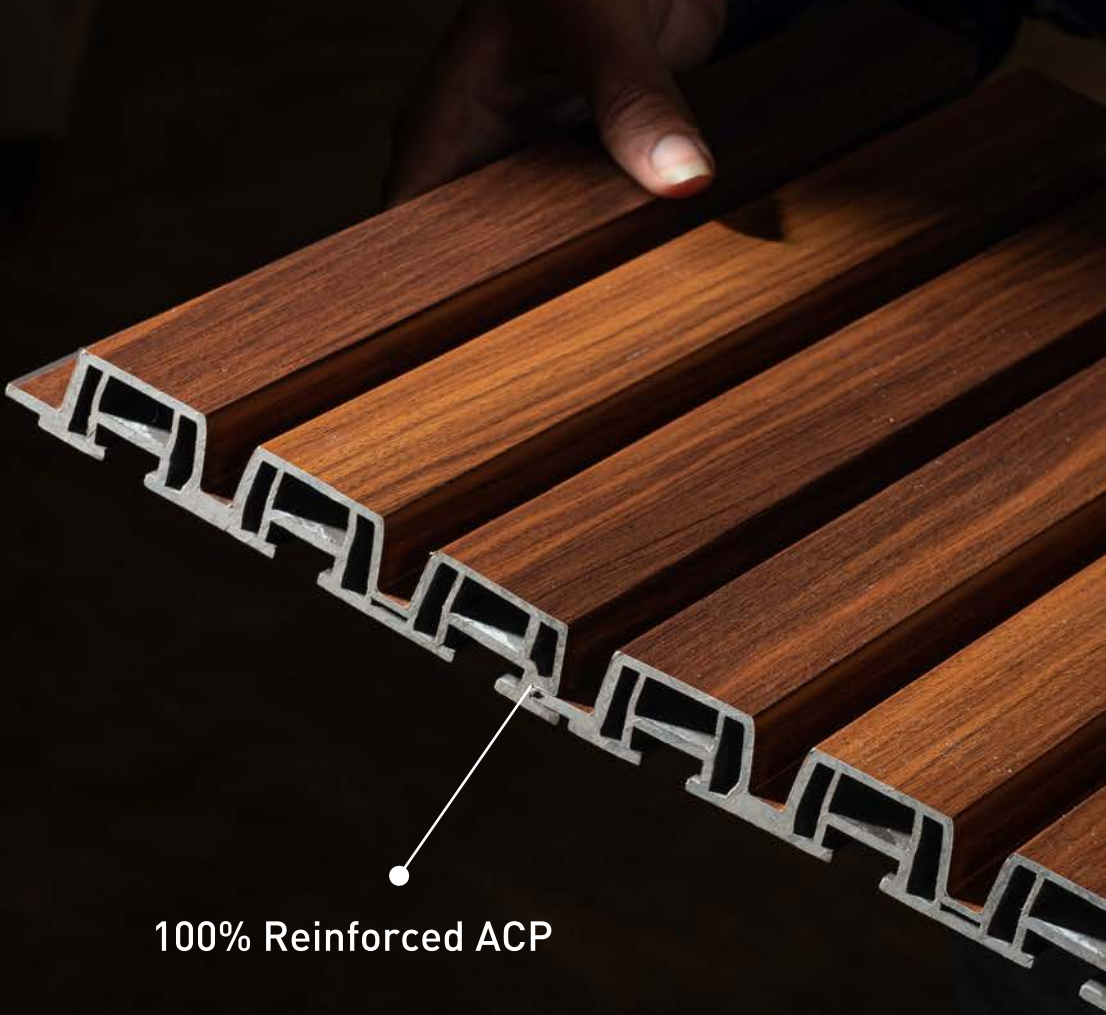


WPC WoodClad

Core: Wood Plastic Composite (WPC)
Finish: Co-extrusion WPC Layer
Height: 9ft (2750mm)
Width: 8.62 inches (219mm exactly)
Thickness: 26mm

AluClad: Louvers

Product Brochure



100% Reinforced ACP



VivreClad

AluClad Louvers



vivre
PANELS

AX 7: GOLDEN OAK

AluClad Louvers

HEIGHT	9 ft
WIDTH	135 mm
THICKNESS	20 mm



vivre
PANELS

AX 6: PLANKED WALNUT

AluClad Louvers

HEIGHT	9 ft
WIDTH	135 mm
THICKNESS	20 mm



vivre
PANELS

AX 8: SUPER BLACK

AluClad Louvers

HEIGHT	9 ft
WIDTH	135 mm
THICKNESS	20 mm

AluClad: Louvers
Visualizer



AX 7: GOLDEN OAK



AX 6: PLANKED WALNUT



AX 8: SUPER BLACK

AluClad: Siding Board

Product Brochure



100% Reinforced ACP



VivreClad
AluClad Siding Board



ALUCLAD
PANELS

AW 9 SIBERIAN PINE

AluClad Siding Boards

HEIGHT	9 ft
WIDTH	114 mm
THICKNESS	16 mm



vivre
PANELS

AW 11 NATURAL TEAK

AluClad Siding Boards

HEIGHT	9 ft
WIDTH	114 mm
THICKNESS	16 mm



vivre
PANELS

AW 10 GOLDEN OAK

AluClad Siding Boards

HEIGHT	9 ft
WIDTH	114 mm
THICKNESS	16 mm

AluClad: Siding Board
Visualizer



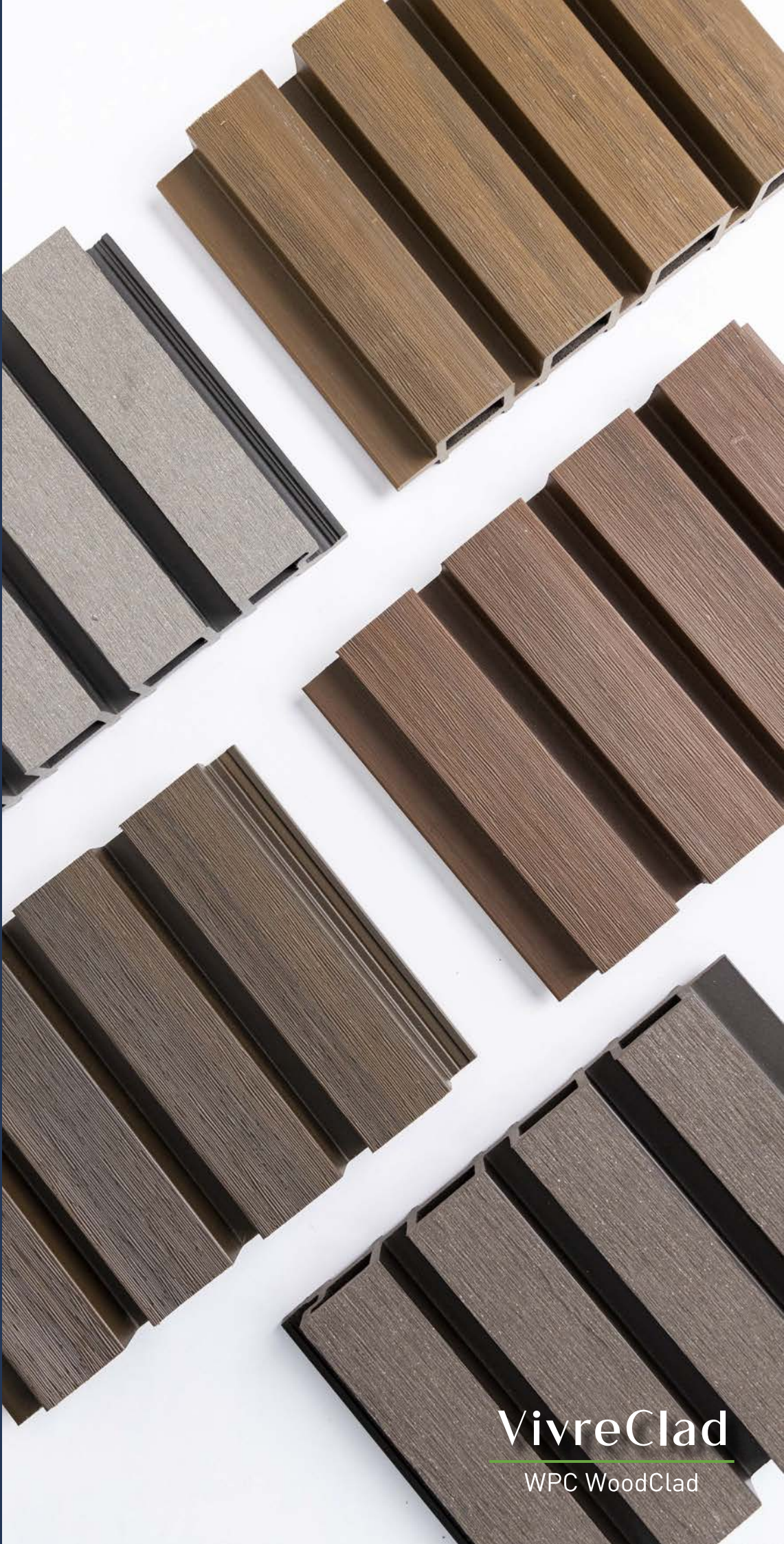
AW 9 SIBERIAN PINE



AW 11 NATURAL TEAK



AW 10 GOLDEN OAK



WPC WoodClad

Product Brochure



VivreClad

WPC WoodClad

vivre
PANELS

VPEX 1: AFRICAN TEAK

WPC WoodClad



HEIGHT	9 ft
WIDTH	219 mm
THICKNESS	26 mm

vivre
PANELS

VPEX 2: BURMA TEAK

WPC WoodClad



HEIGHT	9 ft
WIDTH	219 mm
THICKNESS	26 mm

VPEX 3: WALNUT

WPC WoodClad

vivre
PANELS

HEIGHT	9 ft
WIDTH	219 mm
THICKNESS	26 mm



vive
PANELS

VPEx 4: SUPER MATT LIGHT GREY

WPC WoodClad

HEIGHT	9 ft
WIDTH	219 mm
THICKNESS	26 mm



VPEX 5: SUPER MATT ENGLISH GREY

WPC WoodClad

HEIGHT	9 ft
WIDTH	219 mm
THICKNESS	26 mm



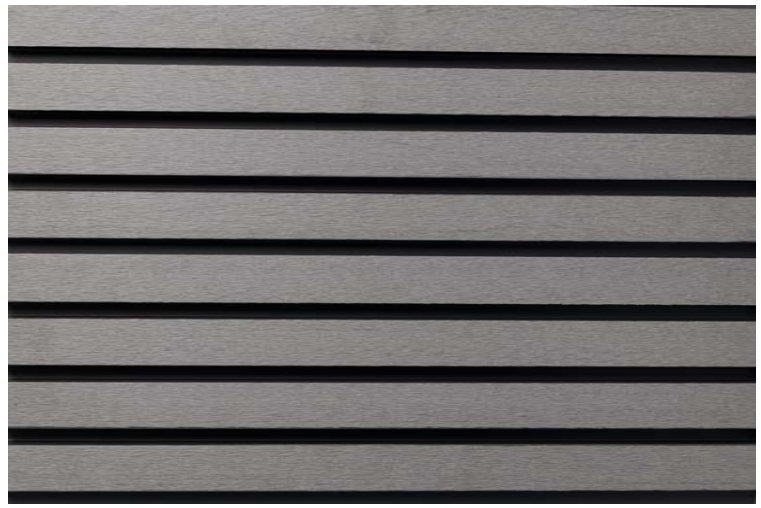
VPEX 1: AFRICAN TEAK



VPEX 2: BURMA TEAK



VPEX 3: WALNUT



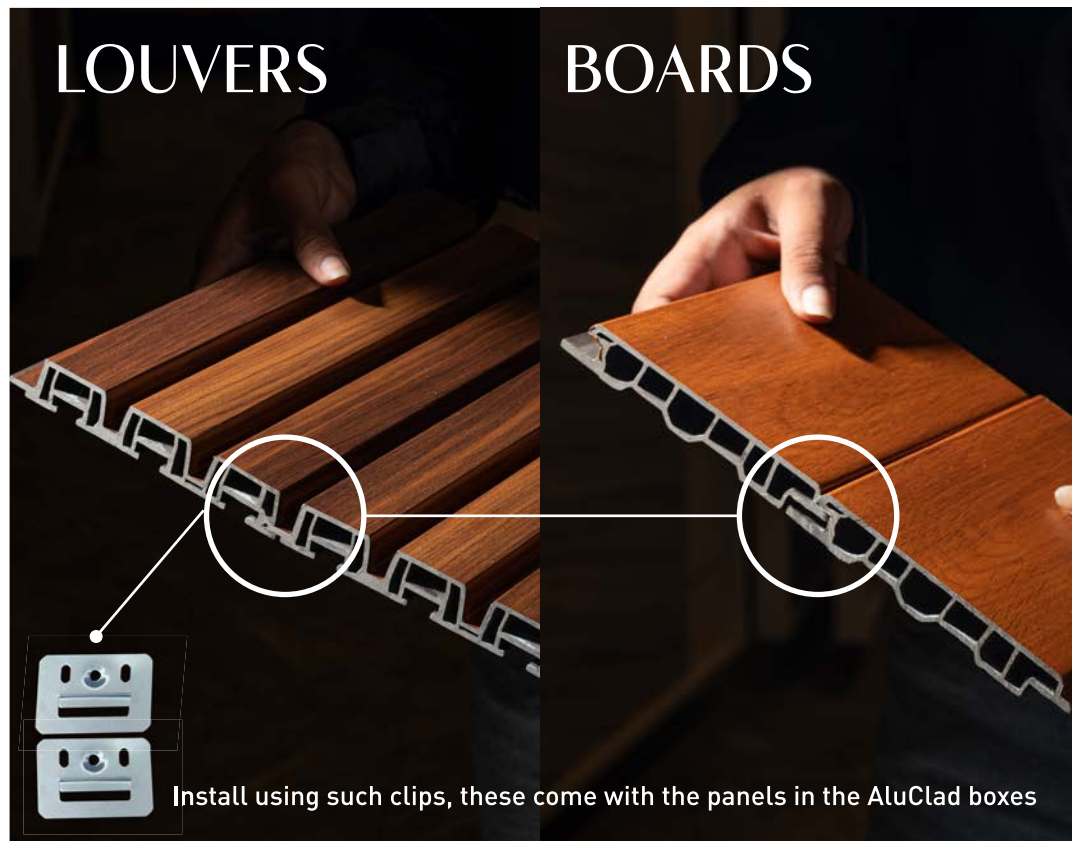
VPEX 4: SUPER MATT LIGHT GREY



VPEX 5: SUPER MATT
ENGLISH GREY

INSTALLATION GUIDE

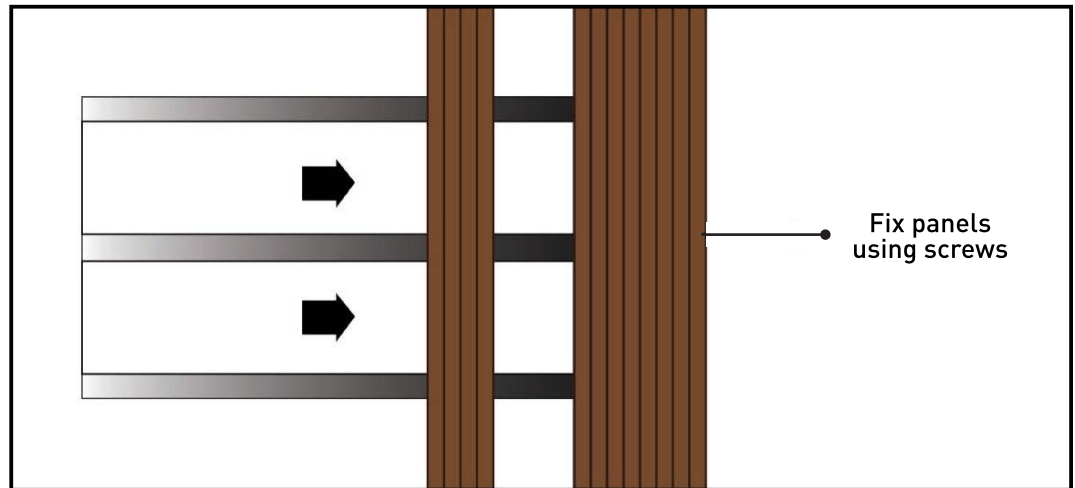
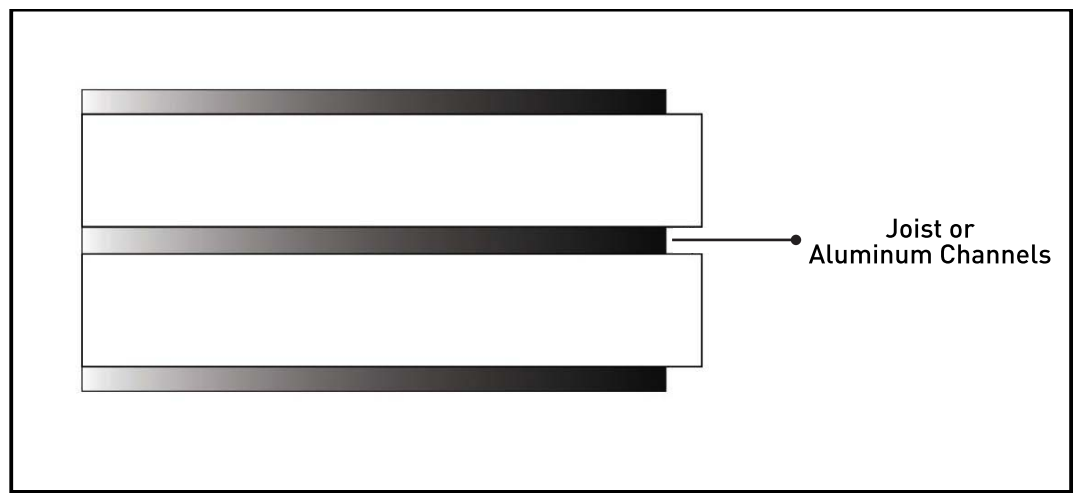
AluClad



- If uneven, fix aluminum channels or joists at the area where the panels are to be applied at intermittent distances. If the surface is even, you may fix the panels directly.
- Place the first AluClad piece at the starting of the area to be paneled. There are installation clips provided inside the panel boxes. Take these clips out.
- Attach the clip to the underside of the AluClad panel and fix using a drywall screw. For each piece, use anywhere between 4 to 8 clips at intermittent distances.
- Place the second panel next to the first panel, in a manner where the sides of the panels interlock in a tongue-and-groove manner, similar to how charcoal louvers are interlocked.
- Attach the clip to the underside of the 2nd AluClad panel and fix using a drywall screw, just like how the first panel was fixed. Continue this till the all the panels are fixed.

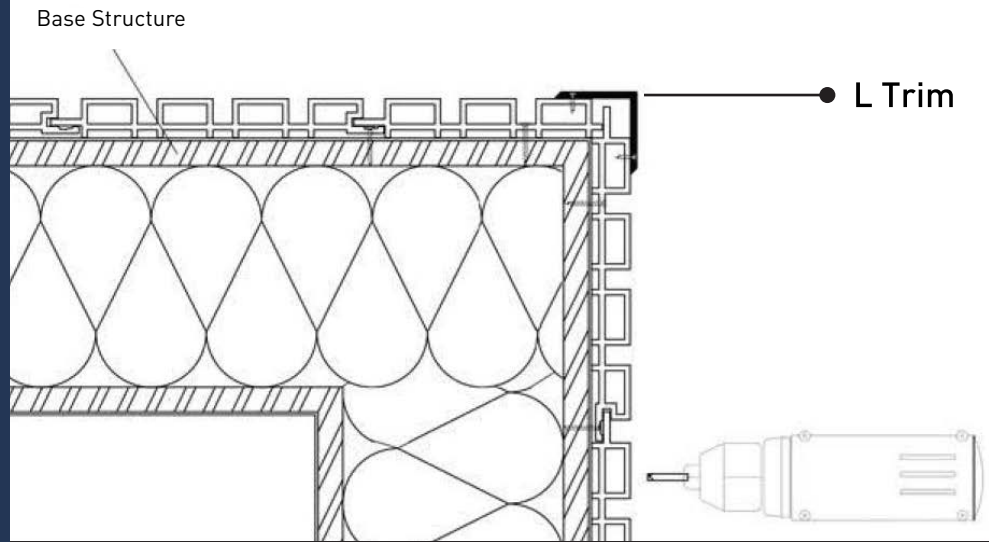
INSTALLATION GUIDE

WPC WoodClad

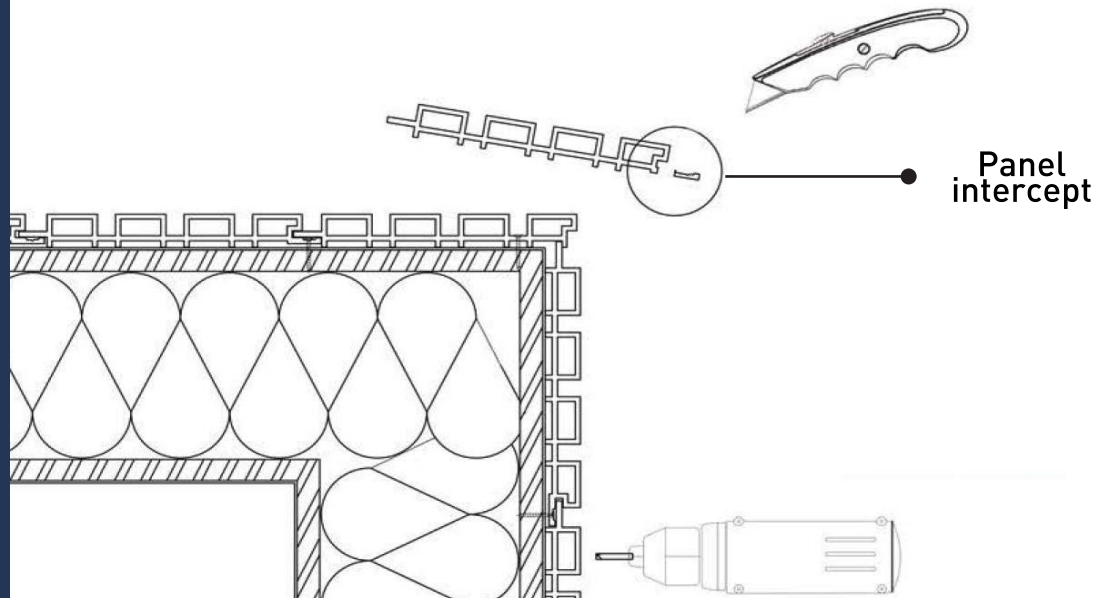


- If uneven, fix aluminum channels or joists at the area where the panels are to be applied at intermittent distances. If the surface is even, you may fix the panels directly.
- Place the first WoodClad piece at the starting of the area to be paneled.
- Using nails, fix the first WoodClad panel. For each piece, use anywhere between 4 to 8 nails at intermittent distances.
- Place the second panel next to the first panel, in a manner where the sides of the panels interlock in a tongue-and-groove manner, similar to how charcoal louvers are interlocked.
- Attach the clip to the underside of the 2nd WoodClad panel and fix using a drywall screw, just like how the first panel was fixed. Continue this till the all the panels are fixed.

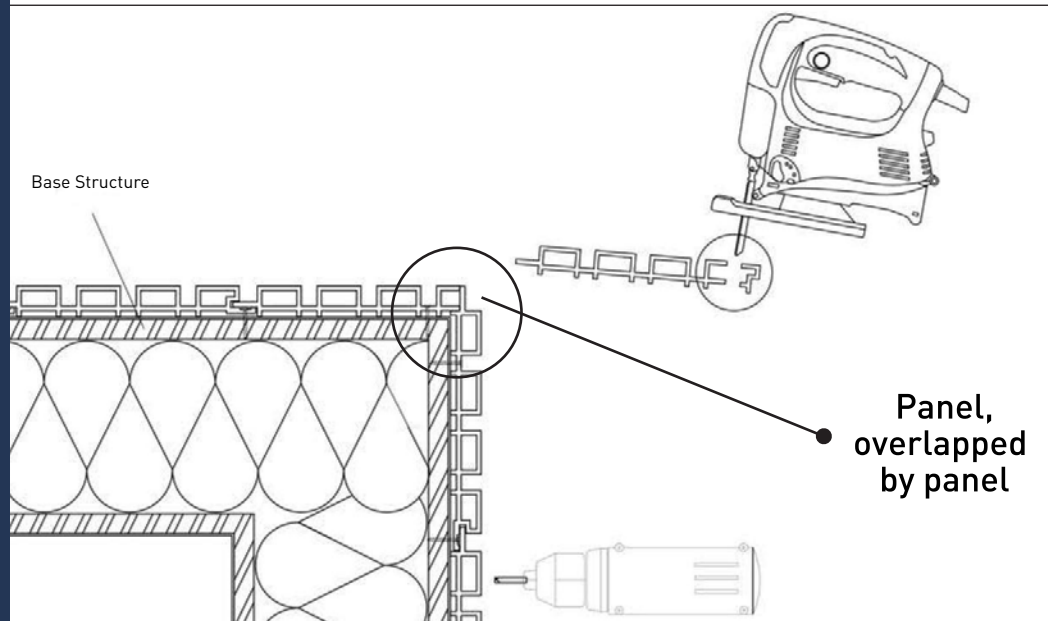
AluClad & WPC WoodClad
INSTALLATION GUIDE - Corners



Option 1: Using an L Trim



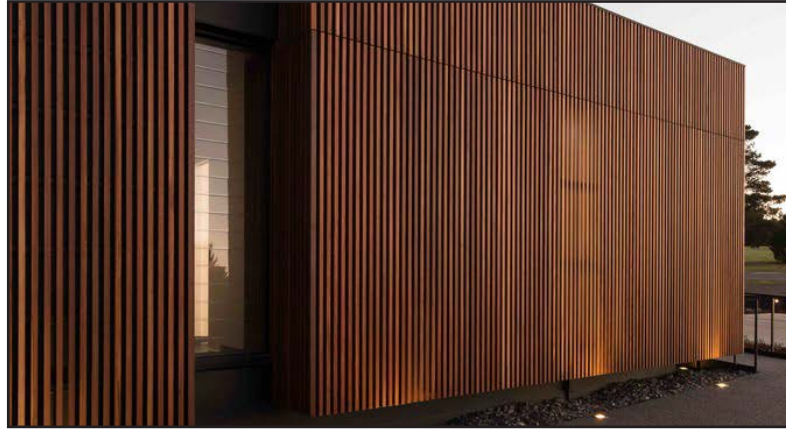
Option 2: Cutting off Panel intercepts



Option 3: Cutting off Panel as per requirement

APPLICATION POSSIBILITIES
AluClad & WPC WoodClad

ALL CLADDING



FACADES



CEILINGS



FENCINGS/RAILINGS/GATES



CLADDING PORTFOLIO

ALUCLAD
FROM AROUND THE WORLD



From the EU

The strength of
Aluminum

01

The Aesthetics of
Wood

Shoreham Street
Architect: Project Orange

Panel Reference: AX 8 Super Black



Herringbone House
Architect: Alison Brooks Architects



Panel Reference: AW 11 Natural Teak

Loft House
Architect: Tom Robertson Architects

Panel Reference: AX 6 Planked Walnut



WohnHaus K.
Architect: MHP Architects

Panel Reference: AX7 Golden Oak



Villa Carter
Architect: Buratti Architetti

The image shows the interior of a building with a curved wooden ceiling made of vertical planks. The walls are constructed from dark, rough-hewn stone blocks. The floor is paved with large, rectangular stone tiles. A large opening in the wall provides a view of a lush, green landscape with trees and a distant town. A white line with dots at both ends points from the text below to a specific plank on the ceiling.

Panel Reference: AW 11 Natural Teak

Spray Farm
Architects: Watts Studio & Amiconi Architect

Panel Reference: AW9 Siberian Pine



Belmont Community Centre
Architect: Billard Leece Partnership

Panel Reference: AW 10 Golden Oak



Wallan Hospital
Architects: Crosshatch

Panel Reference: AX 6 Planked Walnut

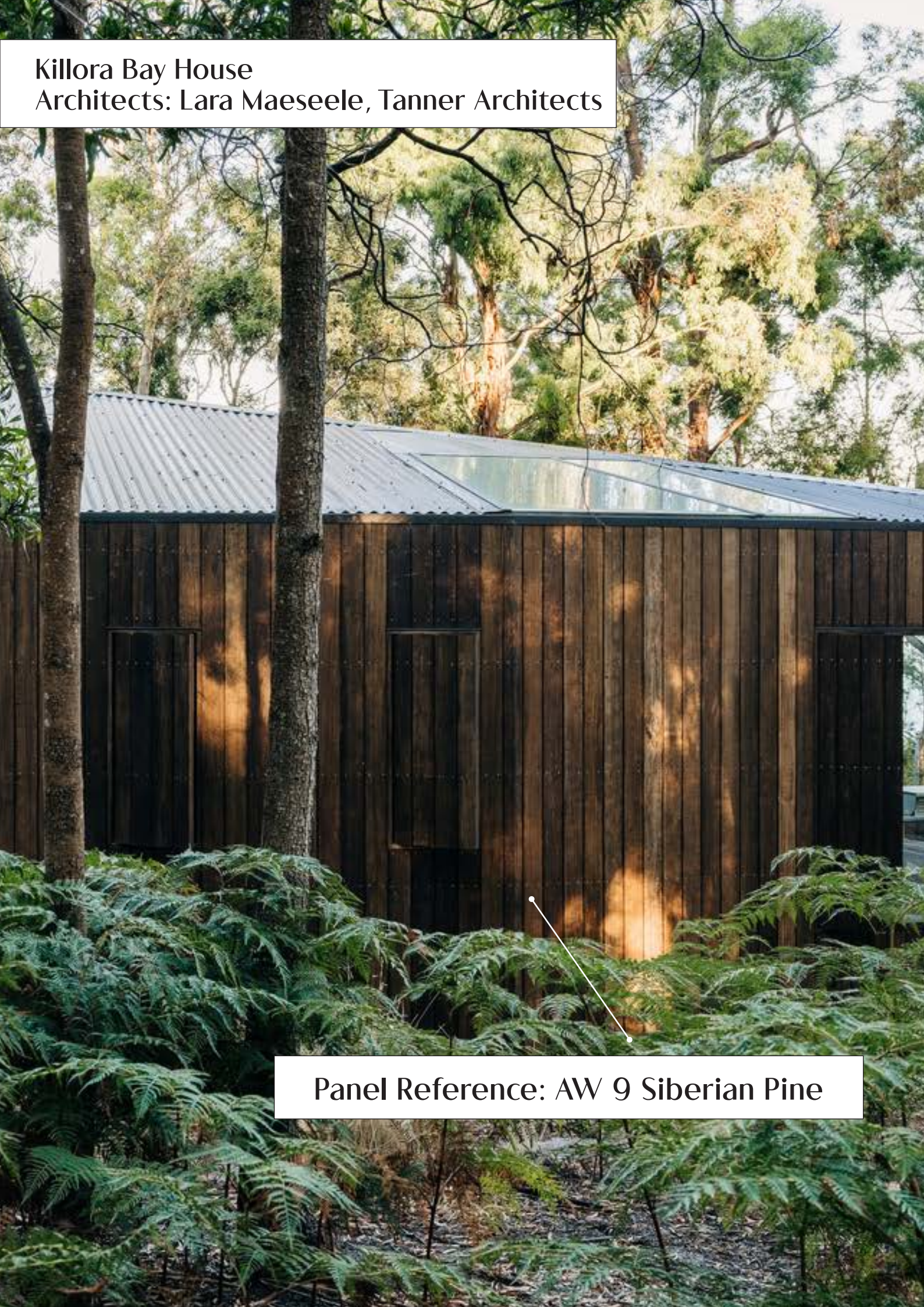


Loft Da Alma Feminina
Architect: Simone Pedreschi Architettura



Panel Reference: AX 6 Planked Walnut

Killora Bay House
Architects: Lara Maesele, Tanner Architects



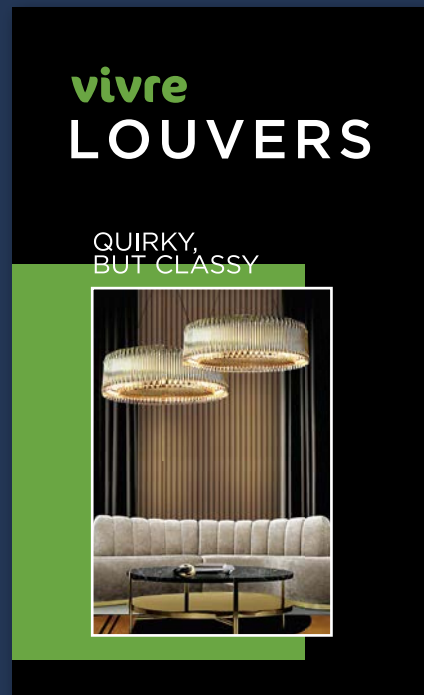
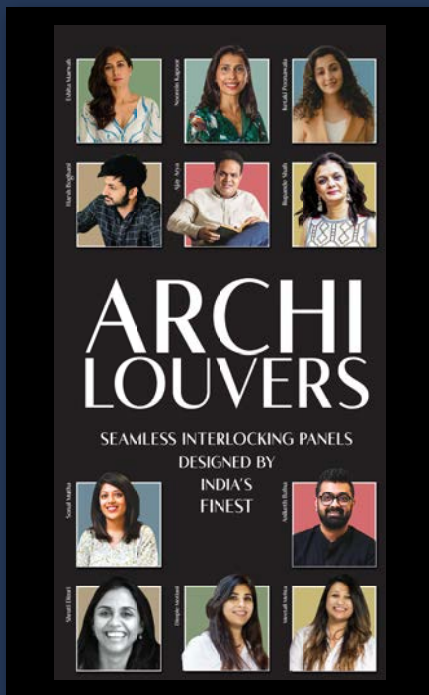
Panel Reference: AW 9 Siberian Pine

For more panelling options:

**VIVRE PROFILES:
WOOD-BASED
ARCHITECTURAL CLADS**

**ARCHILOUVERS:
CUSTOM-DESIGNED
PS PANELS**

**VIVRE LOUVERS:
PS BASED
INTERIOR PANELS**



TAP FOR CATALOGUE



TAP FOR CATALOGUE



TAP FOR CATALOGUE



vivre PANELS



[vivrepanels](#)



[vivrepanels.com](#)



info@vivrepanels.com



Vivre Panels Pvt Ltd

PLYWOOD & BOARDS

TEAK PLYWOOD

FLEXI PLYWOOD

ORIENTED STRAND BOARD (OSB)

FINGER JOINT BOARD

RUSSIAN BIRCH PLYWOOD

GURJAN PLYWOOD

PVC

PVC BOARD

PVC DOORS

VENEERS

TEAK VENEERS

RECON VENEERS

DECORATIVE VENEERS

VIVRE DECOR

VIVRE PROFILES

VIVRE ARCHILOUVERS

VIVRE LOUVERS

VIVRE WOODCLAD:
WPC EXTERIOR
CLADDING

Vivre products add natural beauty to your spaces. Color variance, weave irregularities and shading in these products are to enhance natural beauty and are not imperfections. Utmost care has been taken to provide accurate descriptions and technical specifications. Please excuse errors and omissions, if any. No guarantee / warranty of the product after installation (dimension tolerance +/- 5-10%). Technical specifications and products are subject to change without prior intimation. Use same batch material to avoid color variations, Vivre confirms that all products are free from manufacturing defects and perfectly fit for use in normal conditions.